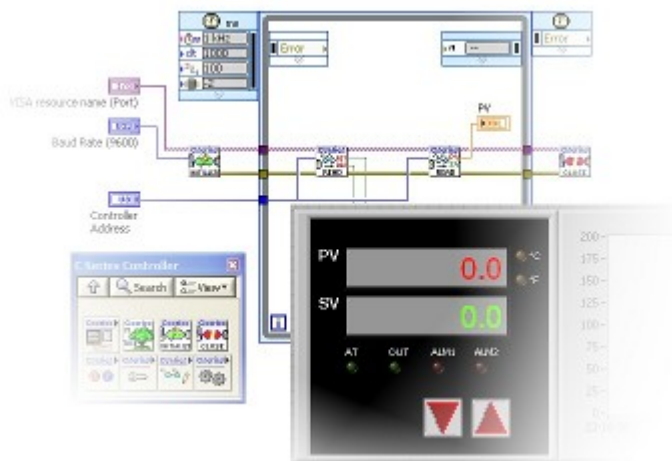


New Product Announcement

Process Controller Communication Library for LabVIEW™



Overview

Many panel-mounted process or temperature PID controllers have RS-485 serial communication capability. Interfacing with LabVIEW™ from National Instruments is a quick and low-cost way to add supervisory control and data acquisition (SCADA) to one or more loops using a DIN-sized controller in a process control application, or to integrate these controllers into test setups in a laboratory environment.

At about the cost of one controller unit, these libraries provide a suite of subVIs written in a familiar, instrument driver-style approach that you can use to implement RS-485 communication directly between LabVIEW™ and the controller. The libraries turn RS-485 communication into a “drag-n-drop” coding process with worrying about synchronizing timing or remembering register addresses. Labor-saving, device-specific palettes of VIs provide quick access to the features you need. Friendly controls and typedefs save remembering command options and interpreting responses.

Compatible with the following controllers

- Love Controls C Series
- Love Controls B Series
- Omega CN73x, CN71x, CN74x
- Omega CN72xx, CN75xx, CN76xx, CN78xx
- Delta DTA Series
- Delta DTB Series

Includes VIs you need to be up and running fast

- RS-485 port initialization
- Read/write process and setpoint variables
- Monitor alarm and output status
- Configure controller modes and settings

Applications

- Setpoint profiles, recipes
- Manage configurations
- Supervisory control
- Monitoring and data acquisition
- Integration of controllers with more traditional test applications

More Information

- Supports LabVIEW™ 8.0 and later
- Read more about example applications, view user manual, FAQs and other support information at <http://www.integratedpro.com>
- This product has a 30 day money back satisfaction guarantee. It is for use on a single computer. Please contact us if you need volume licensing or a redistributable library.

All trademarks are property of their respective owners. Integrated Pro is not affiliated with Love Controls, a Division of Dwyer Instruments, Inc., Omega Engineering, Inc. or Delta Electronics, Inc. Integrated Pro is a National Instruments Alliance Member.